

Supplementary Data

Table S1: Colony characteristics of test isolate

	Characteristics
Size	1mm
Shape	Circular
Colour	Off white
Margin	Entire
Elevation	Flat
Opacity	Translucent
Consistency	Butyrous
Gram nature & Morphology	Gram negative cocco-bacilli
Motility	Motile

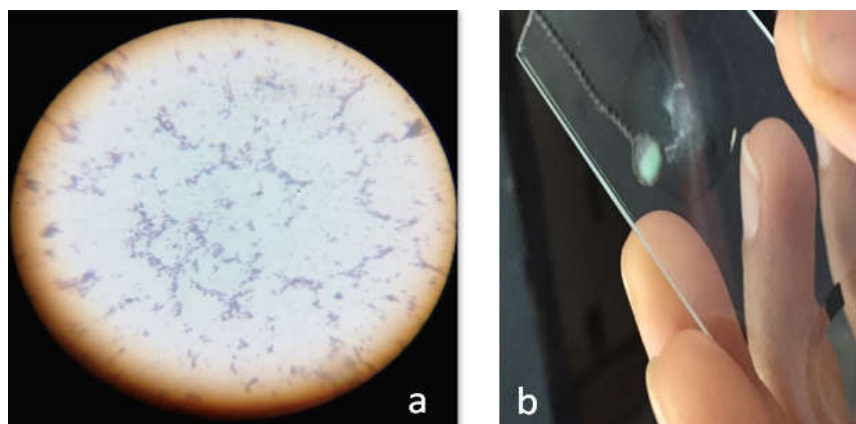
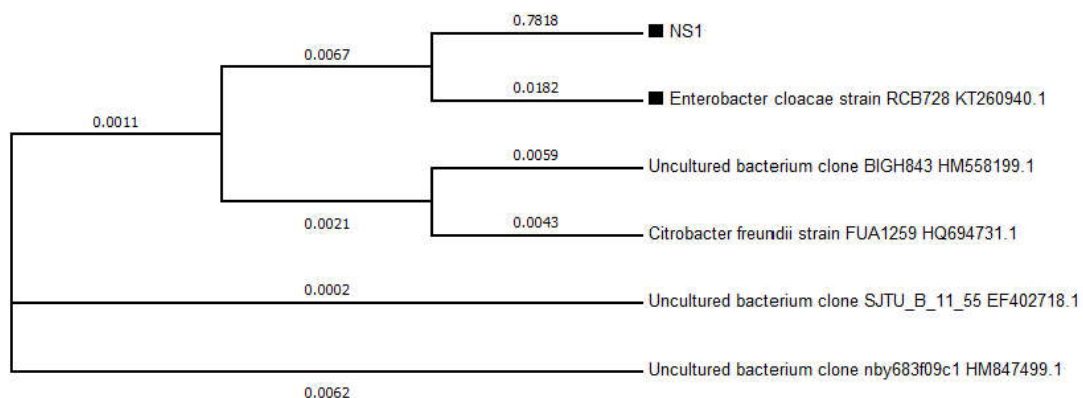


Figure S1: Confirmation of gram nature by (a) gram staining and (b) KOH string test.

Phylogram



Result: The Sample NS1 showed best score homology with *Enterobacter cloacae* RCB728 (AC.NO. KT260940.1).

Figure S2: Phylogenetic tree of the identified bacteria.

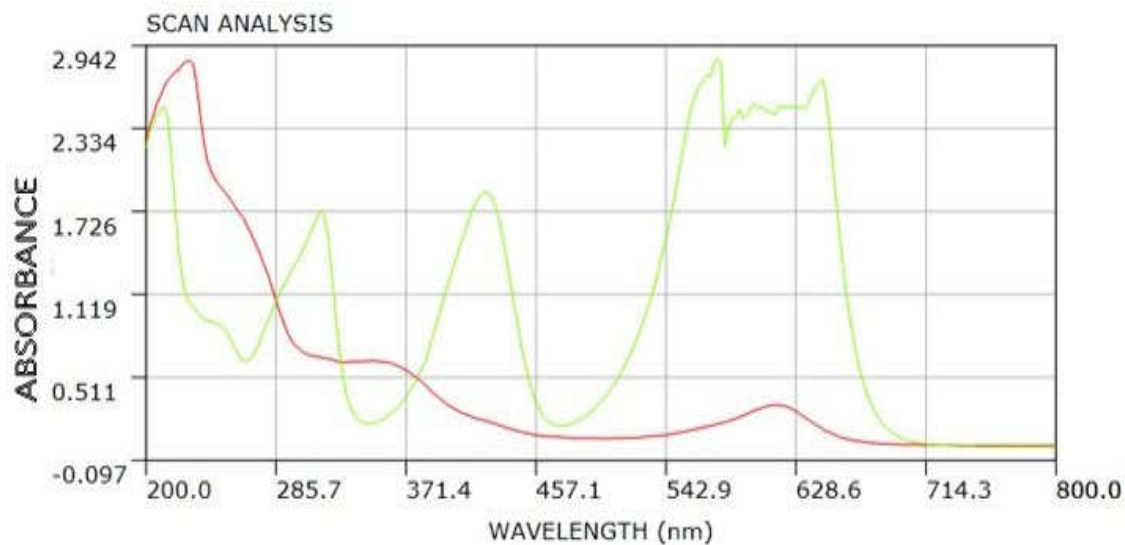


Figure S3: UV-VIS spectra of malachite green dye and its decolorized metabolites.